

ELEVATOR SUBMITTAL PACKAGE

Date Submitted: **FEBRUARY 05, 2018**

For Project:

LV EXISTING BUILDING

TKE Job Number: **963-602-01A**

**PRELIMINARY
DRAWINGS**

Elevator(s): **1 (SIMPLEX)**

FOR APPROVAL

Located At:

111

LAS VEGAS, NV 89000

Company (Mail To):

--[N/A]--

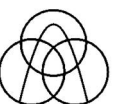
--[N/A]--

--[N/A]--

GC Phone:

Attention:

--[N/A]--



INSTRUCTIONS

Failure to complete the Contractor Verification Sheet and Approve drawings WILL result in delay of fabrication and shipping of equipment.

Check ALL hoistway dimensions, elevator travel (floor to floor heights), pit depth, clear over-head, machine room dimensions and entrance wall thickness. Mark-up drawings accordingly, and remit with necessary approval (i.e: approved or approved as noted) to the Local ThyssenKrupp Elevator Office.

Complete all information on the Contractor Verification Sheet.

Provide a firm on-site date to the Local ThyssenKrupp Representative.

Any previously quoted manufacturing lead-times for material delivery, shall begin the date of receipt by ThyssenKrupp of ALL approvals, confirmations, and a fully executed subcontract agreement. The installation start date cannot be any earlier than the delivery of the material to the site and the completion of all items shown on the Pre-Installation Checklist sent to you in this submittal package.

INFORMATION

"ALL DEPICTIONS, DIMENSIONS, MEASUREMENTS AND ALL OTHER INFORMATION CONTAINED IN THESE DRAWINGS ARE FOR ILLUSTRATION PURPOSES ONLY. THE CONSTRUCTION MANAGER AND/OR GENERAL CONTRACTOR BEARS FULL RESPONSIBILITY TO PROPERLY BUILD THE NECESSARY HOISTWAYS, CONTROL-ROOMS, AND/OR MACHINE-ROOMS TO ACCOMMODATE THE ELEVATOR EQUIPMENT PURCHASED." IN NO EVENT WILL THYSSENKRUPP ELEVATOR CORPORATION BE LIABLE FOR ANY INCIDENTAL, CONSEQUENTIAL, OR INDIRECT DAMAGES (INCLUDING BUT NOT LIMITED TO, DAMAGES FOR LOSS OF PROFITS, DELAY, BUSINESS INTERRUPTION,) ARISING OUT OF THE USE OF THESE DRAWINGS, THE INABILITY TO USE THESE DRAWINGS (INCLUDING ANY INFORMATION CONTAINED THEREIN), OR ANY TRANSACTIONS RELATED TO THE USE OF THESE DRAWINGS. BECAUSE SOME STATES DO NOT ALLOW THE EXCLUSION OR LIMITATION OF LIABILITY FOR CONSEQUENTIAL OR INCIDENTAL DAMAGES, THE ABOVE LIMITATION MAY NOT APPLY TO YOU. IN SUCH STATES, THYSSENKRUPP ELEVATOR CORPORATION'S LIABILITY IS LIMITED TO THE GREATEST EXTENT PERMITTED BY LAW.

REMITTANCE INFORMATION:

PLEASE REMIT ELECTRONIC COPY OF ALL CONFIRMATIONS AND APPROVALS TO:

TO: CARL ALBIENTZ

EMAIL:

PHONE: 702-262-6775

PACKAGE CONTENT:

Contractor Verification Sheet

Instruction and Information Sheet

Approval/Approved Sheet

Layout Sheet

Entrance Sheet(s)

CONTACT INFORMATION:

Sales Representative:	CARL ALBIENTZ	702-262-6775	
Construction Superintendent:	LOU GREB	702-262-6775	
Project Manager:		702-262-6775	

General Contractor Owner Job-Site Pre-Installation Checklist (See G.C. Site Binder)

- The enclosed submittals are in compliance with conditions of ThyssenKrupp Elevator's subcontract or supplying and installing materials and or systems for the project referenced above.

- Enclosed drawings are for approval purposes only and not to be used for construction.

CONTRACTOR VERIFICATION SHEET

ELEVATOR DESIGNATION: 1

FACTORY JOB NUMBER: _____

REQUIRED CAB INFORMATION:

REQUIRED ENTRANCE INFORMATION:

REQUIRED POWER CONFIRMATION:

FLOORING TYPE: VCT CARPET OTHER, COMPLETE BELOW:

FLOORING WEIGHT: _____ LBS/SQ.FT

(WITH 3/8" MAXIMUM FLOOR THICKNESS)

* IF FINISHES ARE NOT FROM TKE COLOR BROCHURE, ADDITIONAL CHARGES WILL APPLY.

DESCRIPTION OF YOUR CAB FEATURES:

CAB TYPE:	FLAT PLASTIC LAMINATE WALLS (TKLP)
CAB WALL FINISH:	SMOKY BROWN PEAR 5488
CAB CEILING:	6-9 LED FIXTURES IN METAL PAN CEILING
CEILING FINISH:	#4 STAINLESS STEEL
CAB DOOR:	#4 STAINLESS STEEL
CAR SILLS:	ALUMINUM
CAB HANDRAIL(S):	(3) 1/4" X 2" CONTINUOUS FLAT BAR
HANDRAIL(S) FINISH:	#4 STAINLESS STEEL
CAB PROTECTION:	PAD BUTTONS PROVIDED. (1) PADS
CAB FLOORING:	FINISH FLOOR WEIGHT (3/8" MAX. THICKNESS) = 50 LBS. BY OTHERS

FEATURES FOR YOUR FIXTURES:

PUSH BUTTON ILLUMINATION: _____

MAIN EGRESS/ FIRE RECALL @ FLOOR MARKED: _____

FLOOR MARKING:	WALL TYPE:	WALL THICKNESS (X):	ENTRANCE DOOR FINISH:	ENTRANCE FRAME FINISH:
3			#4 STAINLESS STEEL	#4 STAINLESS STEEL
2			#4 STAINLESS STEEL	#4 STAINLESS STEEL
1			#4 STAINLESS STEEL	#4 STAINLESS STEEL

WE REQUIRE THAT THE FOLLOWING POWER INFORMATION BE CONFIRMED:

BUILDING POWER: 460 VOLTS A.C., 3 PHASE, 60 CYCLES CONFIRMED

STARTING TYPE: SOLID STATE STARTING

CORRECTED: VOLTS: _____ PHASE: _____ CYCLES: _____

EMERGENCY POWER VERIFICATION:

IS EMERGENCY OPERATION ON BUILDING GENERATOR POWER REQUIRED?

YES NO

IF YES, HOW MANY ELEVATORS WILL BE CAPABLE OF RUNNING AT THE SAME TIME WHILE ON EMERGENCY POWER ? _____

NOTE: IF EMERGENCY POWER IS PROVIDED, ELECTRICAL CONTRACTOR MUST PROVIDE ADDITIONAL CONTACTS TO THE CONTROLLER. SEE A LOCAL THYSSENKRUPP ELEVATOR REPRESENTATIVE FOR MORE INFORMATION.

MATERIAL RELEASE FORM:

In an effort to meet your expectations concerning schedule for the project, we are requesting material delivery/start dates based on the availability or anticipated completion of the items listed in the thyssenkrupp site binder.

Note: Prior to the delivery of material and the start of installation, all items on the pre start check list inside the thyssenkrupp elevator site binder must be completed.

Requested Elevator Material Delivery/Start Date: _____ / _____ / _____
(Delivery of all remaining material, less any early shipment)

The General Contractor agrees to assume responsibility of the equipment the day of arrival from the factory on date mentioned above. Adequate ingress and egress to this area must also be provided along with a dumpster or area for disposing of packaging material. Any relocation of the equipment as directed by the contractor/owner after its initial delivery will be at others (not thyssenkrupp elevators) expense.

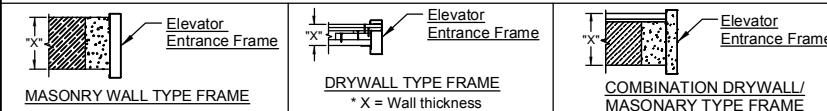
If the site conditions are not in place at the time of elevator delivery, the equipment will be stored per the rates established in the contract and the thyssenkrupp elevator proposal. At such time the site becomes ready for delivery/starting the elevator installation, thyssenkrupp will need payment of any outstanding invoices inclusive of storage costs accrued before delivery/mobilization and in the thyssenkrupp elevator proposal for storage fees.

CUSTOMER APPROVAL BOX

(THESE ITEMS MUST BE CONFIRMED BEFORE THE ELEVATOR WILL BE MANUFACTURED)

NET TRAVEL:	<input type="checkbox"/> CONFIRMED AS SHOWN ON SECTION VIEW <input type="checkbox"/> CORRECTED: _____	CLEAR OVERHEAD:	<input type="checkbox"/> CONFIRMED AS SHOWN ON SECTION VIEW <input type="checkbox"/> CORRECTED: _____
PIT DEPTH:	<input type="checkbox"/> CONFIRMED AS SHOWN ON SECTION VIEW <input type="checkbox"/> CORRECTED: _____	HOISTWAY SIZE:	<input type="checkbox"/> CONFIRMED AS SHOWN ON SECTION VIEW <input type="checkbox"/> CORRECTED: _____
HAND OF DOOR:	<input type="checkbox"/> CONFIRMED AS SHOWN ON SECTION VIEW <input type="checkbox"/> CORRECTED: _____	FIRE SERVICE LOCATION:	<input type="checkbox"/> PRIMARY SERVICE AT FLOOR: <u>1</u> <input type="checkbox"/> ALTERNATE SERVICE AT FLOOR: <u>3</u>

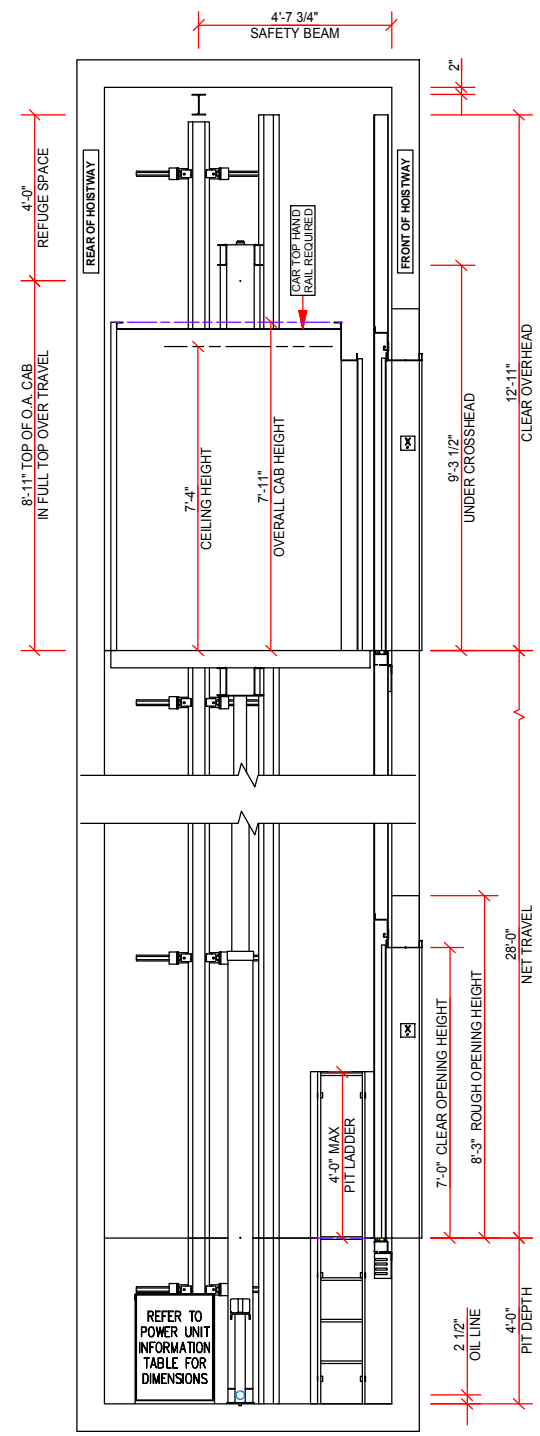
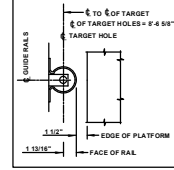
ENTRANCE WALL DETAIL



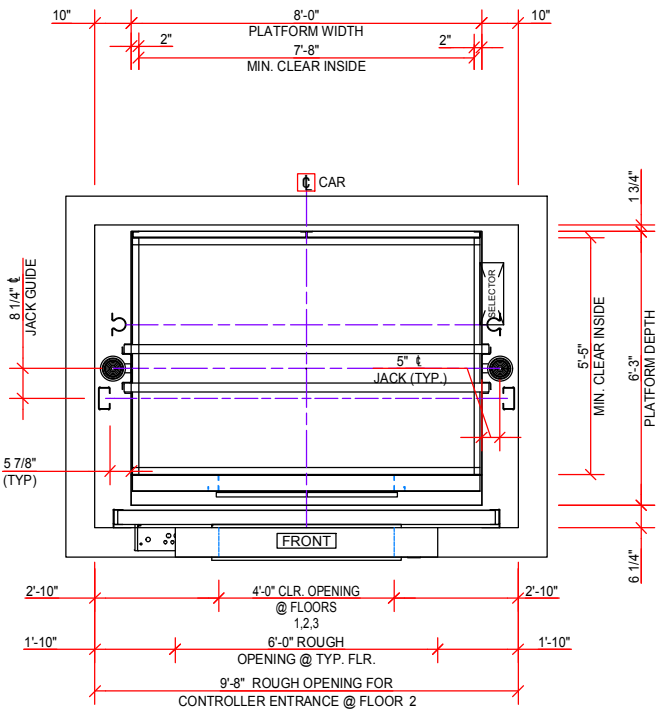
APPROVED BY: _____ DATE: _____
FAILURE TO FULLY COMPLETE THIS SHEET MAY RESULT IN DELAY OF SCHEDULE

POWER UNIT INFORMATION			
WIDTH	DEPTH	HEIGHT	WEIGHT W/OIL (LBS)
7'-0 1/2"	1'-10 15/16"	2'-8 3/16"	2,130
HYDRAULIC FLUID REQUIRED IN SYSTEM = 151 GALLONS			
HEAT PRODUCED BY ELEVATOR EQUIPMENT IN HOISTWAY = 2256 BTU/HR			

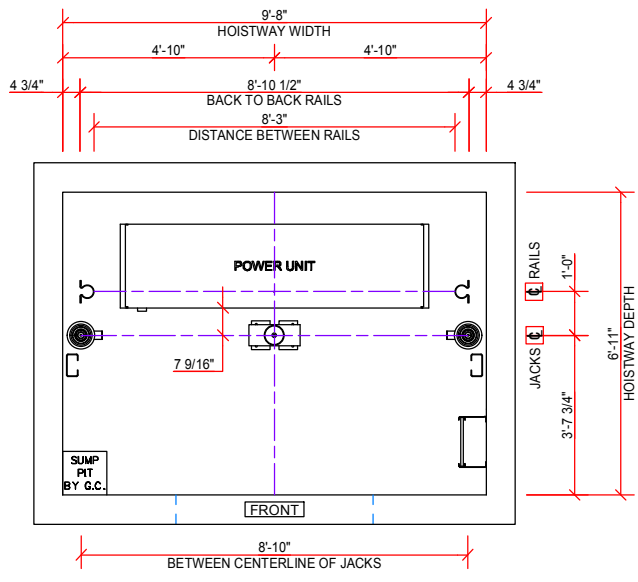
HYDRAULIC ELEVATOR CONTRACT DATA		
TYPE:	endura 40 A	ELEVATOR DESIGNATION: 1
SPEED:	150 FPM UP / 150 FPM DOWN	CAPACITY: 4,000 LBS
CAR ENCLOSURE:	TKLP	DOOR HAND: CENTER FRONT
PLATFORM THICKNESS:	4 7/8"	FINISHED FLOOR: BY OTHERS
CAR WEIGHT:	3,201.00 LBS	
TELEPHONE:	BY ELEVATOR COMPANY	PIT LADDER: BY ELEVATOR COMPANY
POWER UNIT:	EM-190, 50 HP	POWER SUPPLY: 460 V 3 Phase 60 Cycles
STARTING:	Solid State Starting	OPERATION: TAC32
GLOJ:	7,201 LBS	GLOPU: 8,015 LBS
OVER TRAVEL:	BOTTOM: 8 1/2" TOP: 1'-0"	
JACK MODEL:	2.5T III TWIN/TELE	PLUNGER WEIGHT: 814.00 LBS
PLUNGER LENGTH:	UPPER: 14'-8" MDL: 11'-7 5/8" LOWER: 11'-5 7/8"	
PLUNGER WALL THK:	UPPER: 0.375" MDL: 0.25" LOWER: 0.25"	
PLUNGER O.D.:	UPPER: 2.5" MDL: 3.75" LOWER: 5.0"	
CYLINDER LENGTH:	11'-5 3/4"	CYLINDER O.D.: 7 1/4" WALL THK: 1/4"
NET AREA:	23,693 SQ.IN.	BETWEEN PIT FLOOR & CAR BOLSTER ON COMPRESSED BUFFER: 2'-2 3/8"
BOTTOM CAR RUNBY:	6"	
EST. WORKING PRESS:	372 PSI	CAR BUFFER STROKE: 2 1/2"
SPRING #:	780CB1	SPRING CAPACITY: 15,223 LBS
JACK REACTION (EA.):	8,675.00 LBS	CAR BUFFER REACTION: 21,112.00 LBS



SECTION J-J

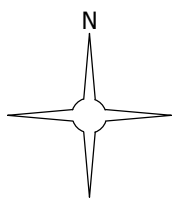


HOISTWAY PLAN

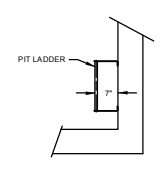


PIT PLAN

POSITION OF SUMP PIT CANNOT BE RELOCATED



SUMP PIT SIZE TO BE DETERMINED BY GENERAL CONTRACTOR



CAR FRAME	S = 3.93 FORMED	S = 5.67 FORMED	S = 1.38 FORMED
	I = 11.80 CROSSHEAD	I = 23.39 BOLSTER	I = 2.17 STILE
	A = 2.03 7GA x 6" x 3"	A = 2.40 7GA x 8 1/4" x 2 3/4"	R = 1.01 10GA

RAIL FORCES	F1	F2	SEISMIC RAIL FORCES ZONE: 2	
	745 LBS	454 LBS	F1 = 897 LBS	F2 = 449 LBS

CAR STATION FEATURES: Traditional Fixtures, T2 Buttons, Telephone, Position Indicator

PUSH BUTTON MARKINGS: 1, 2, 3

CAR RIDING LANTERN: Strike

NOTE A: OIL PIPE LINES AND FITTINGS SHALL BE PROPERLY SUPPORTED TO RELIEVE STRAIN.

NOTE B: ALL REACTIONS INCLUDE ALLOWANCE FOR IMPACT.

NOTE C: THYSSENKRUPP ELEVATOR TO BE NOTIFIED OF ANY CHANGE TO ELEVATOR HOISTWAY OR MACHINE ROOM DESIGN.

NOTE D: ELEVATOR DESIGN & FABRICATION BASED ON ESTIMATED CAB WEIGHT SHOWN. LAYOUT APPROVAL WILL BE CONSTRUED AS FINAL CAR WEIGHT, UNLESS OTHERWISE NOTIFIED.

BY OTHERS
THE FOLLOWING CONDITIONS MUST BE MET BEFORE INSTALLATION IS COMPLETED AND ARE NOT INCLUDED IN THE ELEVATOR CONTRACT

- ELECTRICAL DATA**
- GENERAL CONTRACTOR MUST FORWARD POWER REQUIREMENTS TO THE ELECTRICAL CONTRACTOR.
 - NOTE:** A FOURTH WIRE OF SAME SIZE AS THREE PHASE WIRES IS REQUIRED FOR GROUNDING PURPOSES TO MINIMIZE ELECTRICAL NOISE INTERFERENCE. THE GROUNDING WIRE MUST BE CONNECTED TO THE BUILDING ELECTRICAL SYSTEM GROUND.
 - A MEANS TO AUTOMATICALLY DISCONNECT THE MAIN LINE PER POWER SUPPLY TO THE ELEVATOR PRIOR TO THE APPLICATION OF WATER IN THE ELEVATOR HOISTWAY WILL BE FURNISHED BY THE ELECTRICAL CONTRACTOR THIS MEANS SHALL NOT BE SELF RESETTING.
 - DEDICATED 120 VOLT, 15 AMP SERVICE, ALONG WITH TELEPHONE CIRCUIT WHEN REQUIRED TO TERMINALS OF EACH REQUIRED CONTROLLER (AS LOCATED ON ENTRANCE PAGE) FOR THE FOLLOWING: **ADA PHONE PROVIDED**
 - CAR LIGHT AND ALARM CIRCUIT WITH GFCI PROTECTION PER NEC.
 - GROUP CONTROL, WHEN REQUIRED.
- ACCESS TO THESE COMPONENTS WILL BE FROM INSIDE THE HOISTWAY. THIS WILL REQUIRE THYSSENKRUPP ELEVATOR TO BE ON SITE.
- NOTE:** IF STANDBY POWER IS SUPPLIED TO ELEVATOR, CAR LIGHT AND ALARM CIRCUIT AND GROUP CONTROL SERVICE MUST BE STANDBY POWER BACKED.
- LIGHTING (MINIMUM 200LUX/19FT. CANDLES) AND SWITCH, CONVENIENCE OUTLETS WITH GFCI PROTECTION PER NEC. LIGHTING IS REQUIRED AT THE PIT LEVEL AND THE CONTROLLER LANDING.
 - 3 WAY LIGHT SWITCH LOCATED 4'-0" ABOVE BOTTOM LANDING NEXT TO THE TOP RUNG OF THE LADDER.
 - 3 WAY LIGHT SWITCH LOCATED 4'-0" ABOVE THE CONTROLLER LANDING FLOOR.
 - CONDUIT AND WIRING FROM HOISTWAY TO ELEVATOR MONITORING PANELS BY OTHERS.
 - PROVIDE A POWER TRANSFER WARNING CONTACT THAT CLOSSES 20 SECONDS PRIOR TO TRANSFER IN EITHER DIRECTION AND IT OPENS WHEN TRANSFER IS COMPLETE.
 - TOTAL FULL LOAD UP SPEED AMPS IS BASED ON 100% OF ELEVATOR CAPACITY, THE VALUE NEEDED FOR EMERGENCY POWER SIZING.
 - THE HYDRAULIC MOTORS ARE RATED FOR INTERMITTENT DUTY (SEC. 620-13 AND 430-33). BRANCH CIRCUIT CONDUCTORS CAN BE SIZED FOR AN AMPACITY 90% OF THE MOTORS NAMEPLATE RATING AS DETERMINED BY (SEC. 430-22 [E]).
 - HEAT SENSOR REQUIRED AT CONTROLLER FLOOR TO ACTIVATE SHUNT. HEAT SENSOR IS TO BE LOCATED WITHIN 2'-0" OF THE SPRINKLER HEAD.
 - BATTERY OPERATION LOWERING IS PROVIDED. A MECHANICAL AUXILIARY CONTACT SHALL BE INSTALLED ON THE DISC SWITCH FOR EACH CAR. THE AUXILIARY CONTACT SHALL BE CONFIGURED AS SPST AT 1A 110VAC (MIN). THE AUXILIARY CONTACT SHALL BE OPEN WHEN THE DISC SWITCH IS IN THE OPEN POSITION. IF A SHUNT TRIP CIRCUIT BREAKER IS PROVIDED, AN AUXILIARY CONTACT SHALL BE INSTALLED ON THE CIRCUIT BREAKER.
- PRIMARY FIRE SERVICE LOCATED AT FLOOR: 1
 - ALTERNATE FIRE SERVICE LOCATION AT FLOOR: 3
 - BREAKERS AND DISCONNECT PROVIDED BY THYSSENKRUPP ELEVATOR
 - 150 AMP CIRCUIT BREAKER PROVIDED IN CONTROLLER BY THYSSENKRUPP ELEVATOR

ELEVATOR DESIGNATOR	POWER SUPPLY	HORSE POWER	STARTING A.C. AMPS	TOTAL FULL LOAD UP SPEED MOTOR A.C. AMPS	RATED A.C. AMPS	SHORT CIRCUIT CURRENT RATINGS (AT 600V OR LESS)
1	460	50	204	97	68.1	10,000 AMPS

- GENERAL DATA**
- A PLUMB HOISTWAY BUILT ACCORDING TO CODE AND SIZES SHOWN.
 - ADEQUATE SUPPORT FOR JACK, GUIDE RAIL BRACKETS, AND BUFFERS (FOR REACTIONS SHOWN)
 - HOISTWAY BARRICADES AND ALL CUTTING AND PATCHING TO INSTALL HOISTWAY ENTRANCES, SILLS, HALL FIXTURES, OIL, AND ELECTRIC LINES.
 - PIT LADDER PER CAR (ACCORDING TO CODE) NOTE: MUST BE CLEAR OF ALL ELEVATOR EQUIPMENT.
 - LEAVE OFF WALL PER ROUGH OPENING DIMENSIONS WHERE ENTRANCE IS INCLUDED. SEE INSTALLATION PROCEDURES FOR FRAME-TO-WALL INTERFACE DETAILS TO ENSURE CONFORMANCE WITH LABELED ENTRANCE INTERFACE CONSTRUCTION.
 - AT CONTROLLER FLOOR, LEAVE OUT ENTIRE WALL. SEE ENTRANCE DRAWING FOR DETAILS. **CONTROLLER @ FLOOR: 2**
 - POCKETS IN CORRIDOR WALL FOR HALL FIXTURES. **NOTE:** MUST BE LOCATED AS DIRECTED BY ELEVATOR CONTRACTOR
 - SMOKE SENSORS (AS REQUIRED)
 - ELEVATOR MEETS ASME A17.1 2013 CODE
 - A PROPERLY VENTED HOISTWAY AND MAINTAINED BETWEEN 32°F (0°C) AND 104°F (40°C) WITH NON-CONDENSING HUMIDITY OF 10-95% PER LOCAL BUILDING CODE.
 - SAFETY BEAM REQUIRED PER OSHA 1926 502 PROVIDED AND INSTALLED BY OTHERS, AS DIRECTED BY THYSSENKRUPP FIELD OFFICE DESIGN LOAD = 5,000 LBS (STATIC, NOT IMPACT)

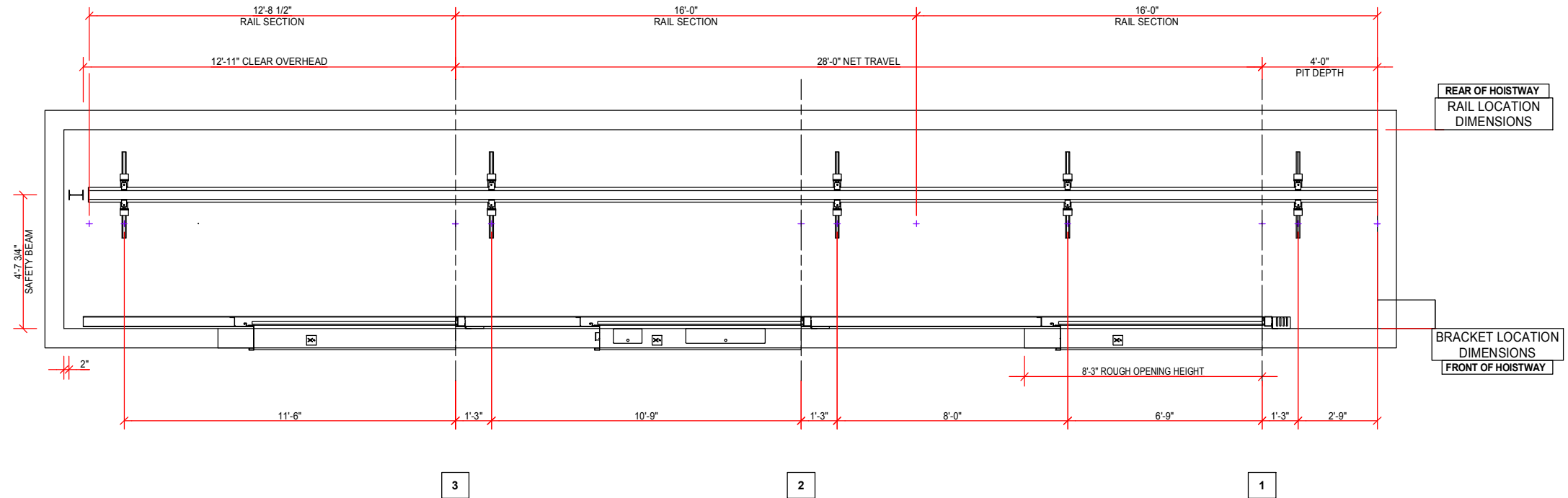
THIS DRAWING AND ALL INFORMATION THEREON IS THE PROPRIETARY PROPERTY OF THYSSENKRUPP ELEVATOR AND MUST NOT BE MADE PUBLIC OR COPIED. THIS DRAWING IS LOANED SUBJECT TO RETURN ON DEMAND AND IS NOT TO BE USED DIRECTLY OR INDIRECTLY, IN ANY MANNER DETRIMENTAL TO THE INTEREST OF THYSSENKRUPP ELEVATOR.

FOR: LV EXISTING BUILDING
ADDRESS: 111
CITY: LAS VEGAS, NV 89000

engineering.tomorrow.together.
thyssenkrupp

DRAWN	REV	JOB NUMBER	DATE	SHEET
CA	A	963-602-01A	2/5/2018	4 OF 7

IF A CUT STARTER RAIL IS CALLED FOR IN THE STACK, CONFIRM THE NUMBER OF SPLICES PRIOR TO CUTTING

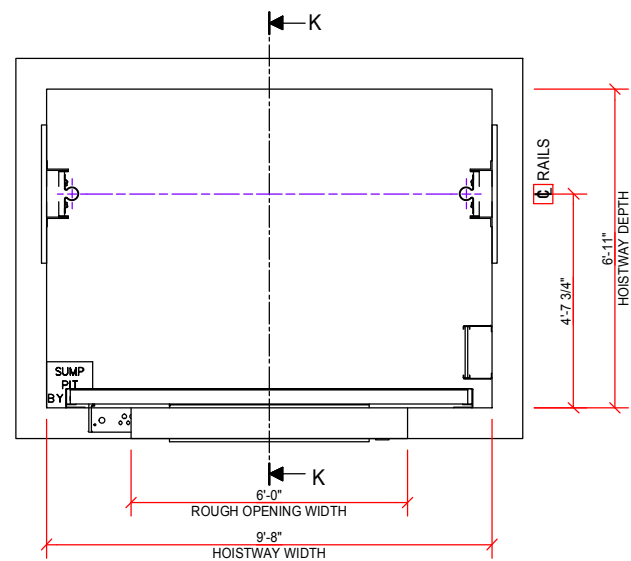


FOR ELEVATOR: 1

CAR RAIL LINE LENGTH QUANTITY (6)	
LENGTH	QUANTITY
16'-0"	4
12'-8 1/2"	2

FLOOR TO FLOOR TRAVEL	
FLOOR TO FLOOR	TRAVEL
2-3	12'-0"
1-2	16'-0"
NET TRAVEL	28'-0"

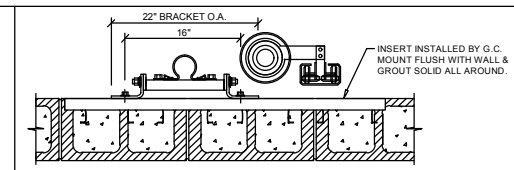
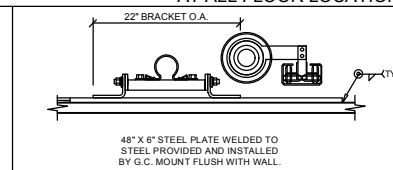
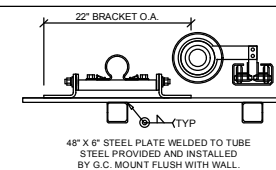
CAR RAIL LINE BRACKETS AND INSERT LOCATIONS REQ. AT :	
LOCATION	DESCRIPTION
14'-4 1/2"	MAX. UNSUPPORTED RAIL BRACKET SPACING
11'-6"	ABOVE TOP FLOOR
1'-3"	BELOW 1-3
6'-9"	ABOVE 1



"PLEASE REFERENCE ASME A17.1 (2.2.2) FOR SUMP PIT REQUIREMENTS"

"WHERE DISTANCE BETWEEN FLOORS EXCEEDS THE MAXIMUM BRACKET SPAN, BRACKET SUPPORT MUST BE PROVIDED MIDWAY. BRACKET SUPPORT WILL NEED TO BE SUPPLIED BY OTHERS TO ALLOW FOR RAIL ATTACHMENT. INSIDE SUPPORT SHALL NOT BE RECESSED BEHIND WALL SYSTEM AND SHALL NOT BE PROUD BY MORE THAN 1/4" AT ANY POINT. COORDINATE WITH THE SUPPORT/OPERATIONS MANAGER"

TYPICAL SURFACE MOUNTING DETAILS



THIS DRAWING AND ALL INFORMATION THEREON IS THE PROPRIETARY PROPERTY OF THYSSENKRUPP ELEVATOR AND MUST NOT BE MADE PUBLIC OR COPIED. THIS DRAWING IS LOANED SUBJECT TO RETURN ON DEMAND AND IS NOT TO BE USED DIRECTLY OR INDIRECTLY, IN ANY MANNER DETRIMENTAL TO THE INTEREST OF THYSSENKRUPP ELEVATOR.

FOR: LV EXISTING BUILDING
 ADDRESS: 111
 CITY: LAS VEGAS, NV 89000

engineering.tomorrow.together.



DRAWN	REV	JOB NUMBER	DATE	SHEET
CA	A	963-602-01A	2/5/2018	5 OF 7

PLEASE REFERENCE THE RAIL STACK SHEET OF THIS PACKAGE FOR BUILDING LANDING MATRIX

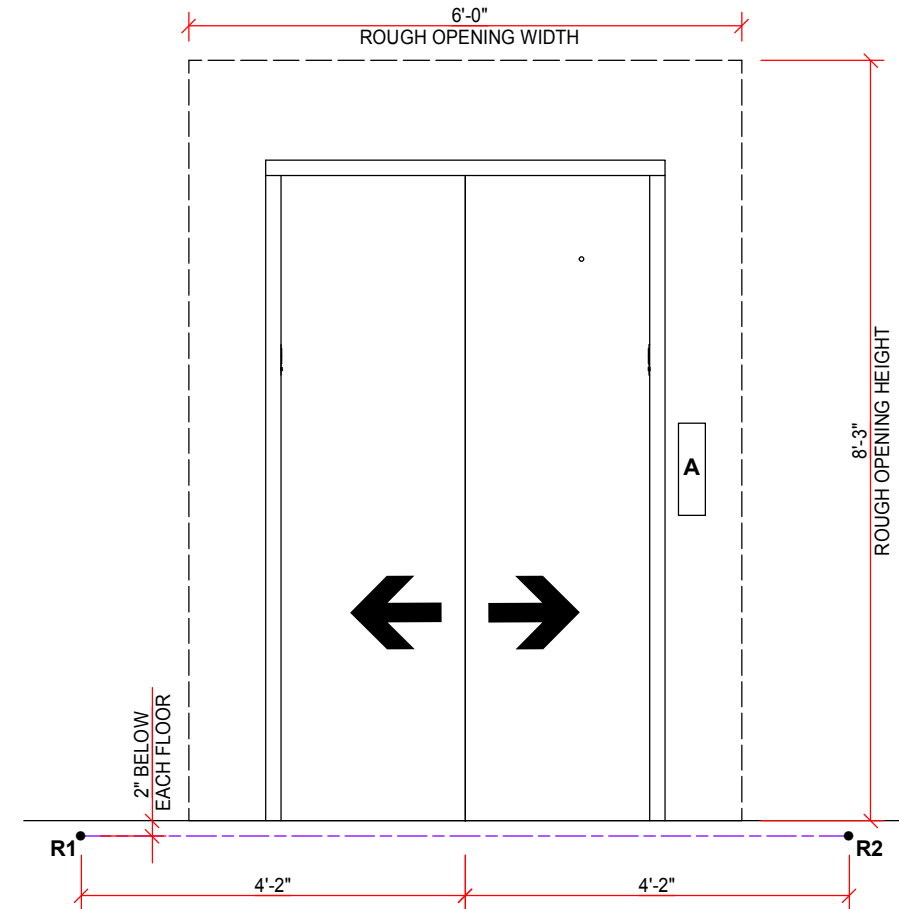
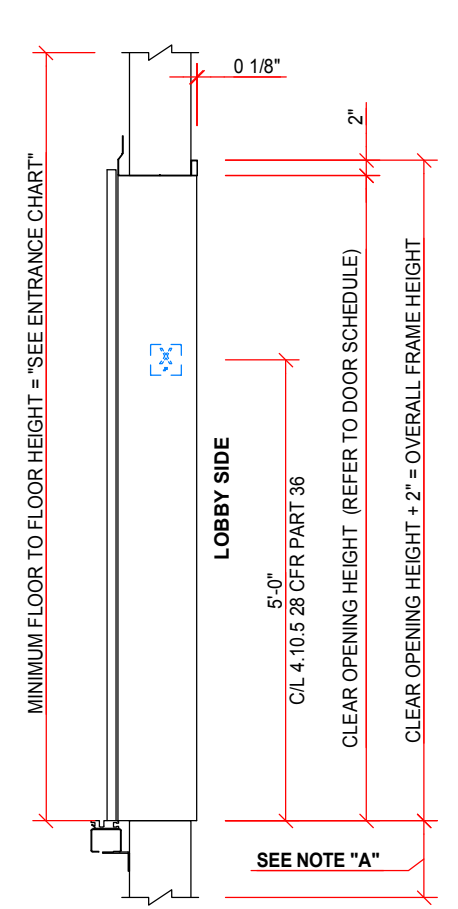
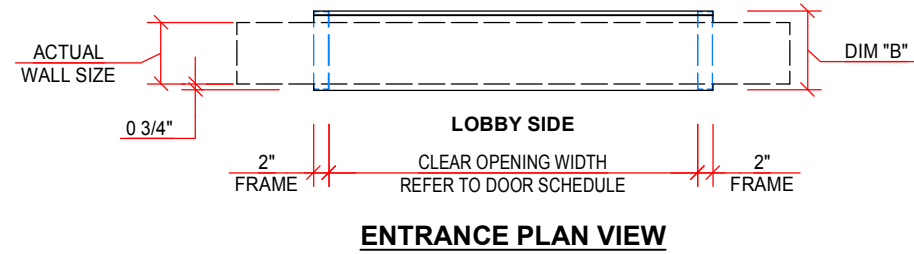
ELEVATOR: 1 FRONT ENTRANCE SCHEDULE				
FLOOR	ENTRANCE DIMS.	WALL TYPE	WALL SIZE	
			ACTUAL	OA. FRAME "B" DIM.
3	7'-0" H X 4'-0" W	TBD	TBD	TBD
2	7'-0" H X 4'-0" W	TBD	TBD	TBD
1	7'-0" H X 4'-0" W	TBD	TBD	TBD

FOR ELEVATOR: 1

TOTAL WEIGHT	ELEVATOR 1	ELEVATOR
CAB AND HALL DOORS	401 LBS	

FEATURES OF YOUR ENTRANCES		
FEATURES	FINISH	LOCATION
DOOR OPEN STRUT BUMPERS:	N/A	@1,2,3
KICKPLATES:	---	@1,2,3
BINDERS:	---	@1,2,3
SILL FINISH:	ALUMINUM	@1,2,3

FEATURES OF ENTRANCES	DATA
SILL MAXIMUM WHEEL LOADS	625 LBS
KEYHOLES TO BE	INCLUDED
THIS FRAME HAS A WARNOCK HERSEY LABEL OF	2 HOURS
DUST COVERS	NOT INCLUDED



HALL FIXTURES ARE FOR REPRESENTATION ONLY. FOR ACTUAL LOCATION OF POCKETS FOR HALL FIXTURES, CONTACT ELEVATOR CONTRACTOR.

FRONT ENTRANCE HALL FIXTURES		
ITEM	DESCRIPTION	FLOOR
A	HALL STATION	TYPICAL

NOTES:
 GENERAL CONTRACTOR RESPONSIBLE FOR HOISTWAY REINFORCING AT FLOOR SLAB BEFORE INSTALLATION OF ENTRANCE FRAMES. MINIMUM OF 4" HIGH X 8" WIDE REINFORCED CONCRETE, REINFORCED OF OPENING REQUIRED FOR ANCHORING SILL SUPPORT ASSEMBLY, REINFORCING TO BE LOCATED WITH RESPECT TO REACTION POINTS, REFERENCE INSTALLATION DRAWINGS ARE AVAILABLE UPON REQUEST.

REACTIONS (LBS.) DUE TO LOADS ON DOOR PANELS, APPROX. HORIZONTAL LOADS AND LOCATION TO BUILDINGS SHOWN PER ASME A17.1 PART II, THE SPECIFIED LOADS ARE CONSIDERED IMPACTED.

NOTE "A":
 8" MINIMUM STRUCTURAL SUPPORT FOR SILL INSTALLATION

ENTRANCE CHART	
M721 ENTRANCE:	
CENTER OPENING AND 1 SPEED = FRAME OPENING + 1'-3"	
2 SPEED = FRAME OPENING + 1'-5"	

R2	334	545
R1	545	334
	CASE 1	CASE 2
DOOR REACTION		

ENTRANCE LEFT SIDE VIEW

ENTRANCE TYPE : M721 FOR ELEVATOR 1

ENTRANCE ELEVATION VIEW AT TYPICAL FLOOR

1 SPEED CENTER HAND FRONT ENTRANCE FOR ELEVATOR 1

THIS DRAWING AND ALL INFORMATION THEREON IS THE PROPRIETARY PROPERTY OF THYSSENKRUPP ELEVATOR AND MUST NOT BE MADE PUBLIC OR COPIED. THIS DRAWING IS LOANED SUBJECT TO RETURN ON DEMAND AND IS NOT TO BE USED DIRECTLY OR INDIRECTLY, IN ANY MANNER DETRIMENTAL TO THE INTEREST OF THYSSENKRUPP ELEVATOR.

FOR: LV EXISTING BUILDING
 ADDRESS: 111
 CITY: LAS VEGAS, NV 89000

engineering.tomorrow.together.



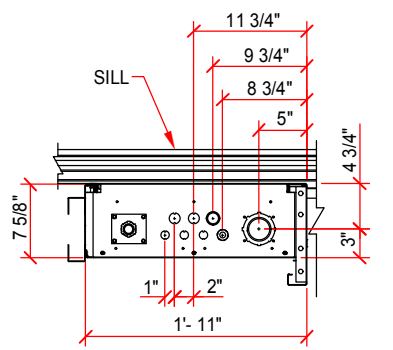
DRAWN	REV	JOB NUMBER	DATE	SHEET
CA	A	963-602-01A	2/5/2018	6 OF 7

ENTRANCE WALL DIMENSIONS		
DIM "C" MIN. WALL THK. REQUIRED	DIM "D" WALL FACE TO FRAME FACE	DIM "E" SHAFT LINER THICKNESS
8"	3/4"	1"

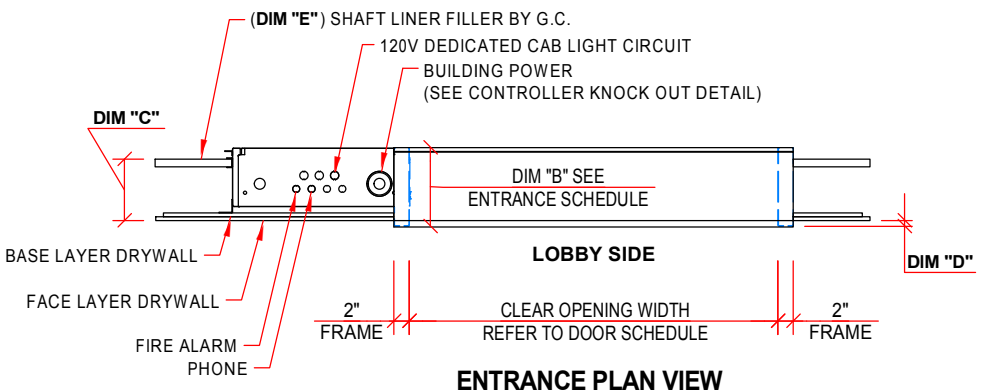
PLEASE REFERENCE THE RAIL STACK SHEET OF THIS PACKAGE FOR BUILDING LANDING MATRIX

ELEVATOR: 1 FRONT ENTRANCE SCHEDULE				
FLOOR	ENTRANCE DIMS.	WALL TYPE	WALL SIZE	
			ACTUAL	OA. FRAME "B" DIM.
3	7'-0" H X 4'-0" W	TBD	TBD	TBD
2	7'-0" H X 4'-0" W	TBD	TBD	TBD
1	7'-0" H X 4'-0" W	TBD	TBD	TBD

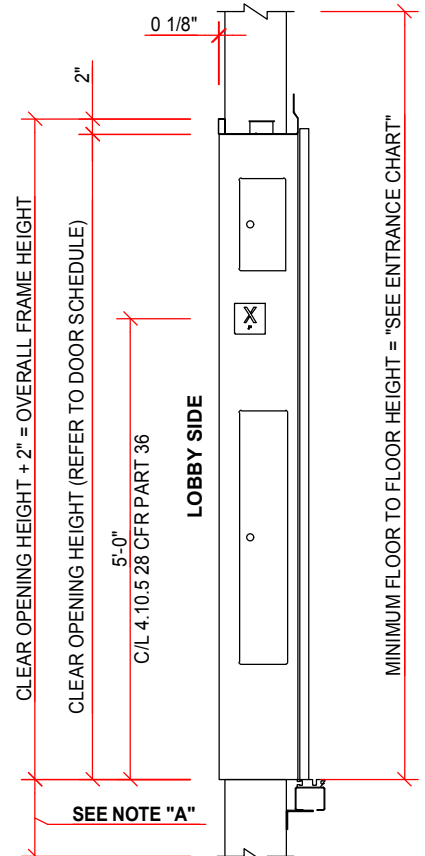
FOR ELEVATOR: 1



**LOBBY SIDE
CONTROLLER KNOCKOUT DETAIL**

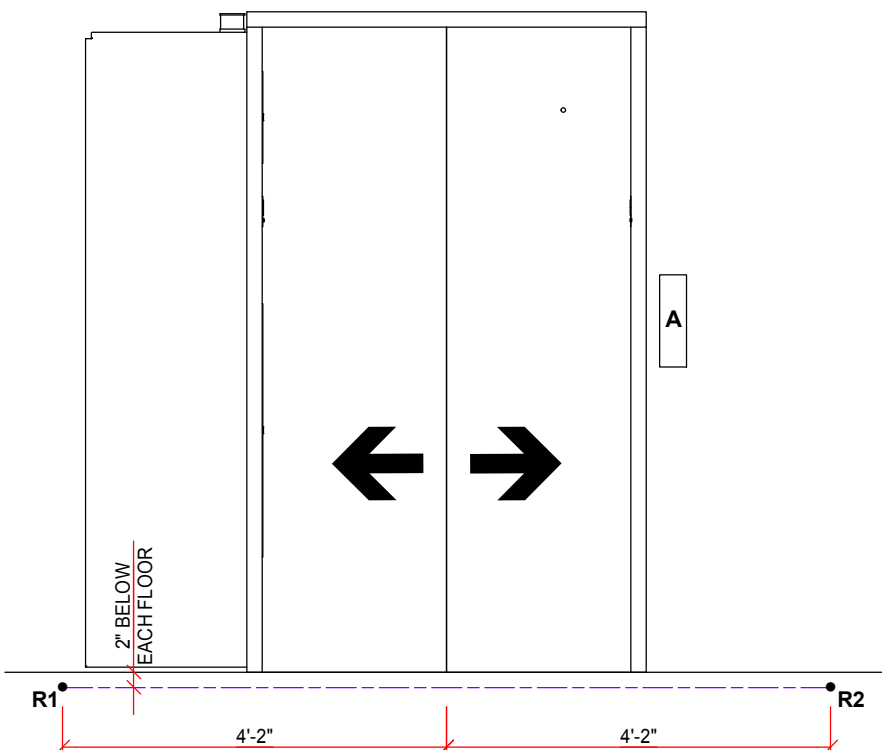


ENTRANCE PLAN VIEW



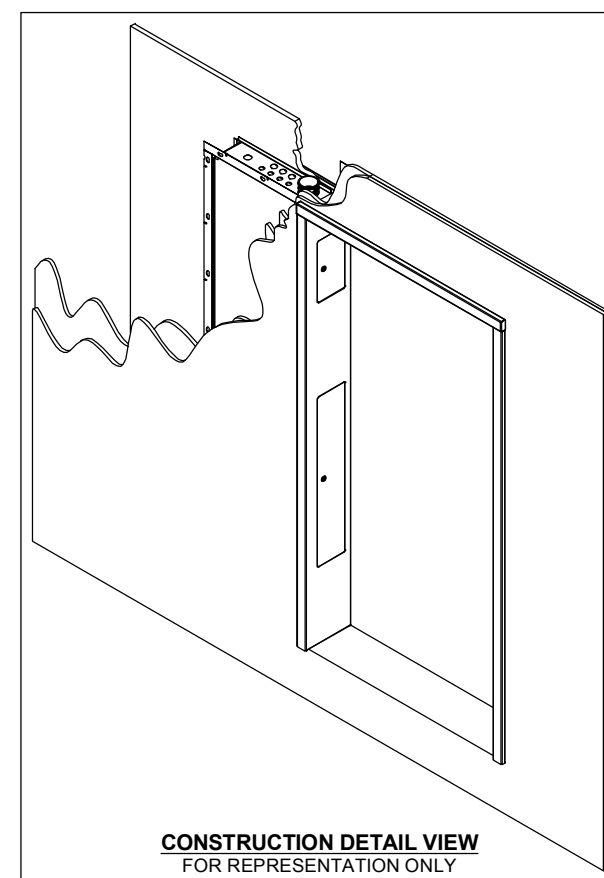
ENTRANCE SIDE VIEW

ENTRANCE TYPE : M721
FOR ELEVATOR 1



ENTRANCE ELEVATION VIEW

1 SPEED
CENTER HAND FRONT ENTRANCE
FOR ELEVATOR 1
LEAVE OFF ENTIRE WALL AT FLOOR 2
FOR FRAME AND CONTROLLER INSTALLATION



**CONSTRUCTION DETAIL VIEW
FOR REPRESENTATION ONLY**

NOTES:
GENERAL CONTRACTOR RESPONSIBLE FOR HOISTWAY REINFORCING AT FLOOR SLAB BEFORE INSTALLATION OF ENTRANCE FRAMES. MINIMUM OF 4" HIGH X 8" WIDE REINFORCED CONCRETE, REINFORCED OF OPENING REQUIRED FOR ANCHORING SILL SUPPORT ASSEMBLY, REINFORCING TO BE LOCATED WITH RESPECT TO REACTION POINTS, REFERENCE INSTALLATION DRAWINGS ARE AVAILABLE UPON REQUEST.

REACTIONS (LBS.) DUE TO LOADS ON DOOR PANELS, APPROX. HORIZONTAL LOADS AND LOCATION TO BUILDINGS SHOWN PER ASME A17.1 PART II, THE SPECIFIED LOADS ARE CONSIDERED IMPACTED.

ELECTRICAL CONTRACTOR NOTE:
3 PHASE POWER, 120V 15 AMP CIRCUIT, FIRE ALARM AND PHONE TO BE ROUTED TO THE TOP OF THE CONTROLLER AT THE CONTROLLER LANDING LEVEL.

NOTE "A":
8" MINIMUM STRUCTURAL SUPPORT FOR SILL INSTALLATION

ENTRANCE CHART	
M721 ENTRANCE:	
CENTER OPENING AND 1 SPEED =	FRAME OPENING + 1'-3"
2 SPEED =	FRAME OPENING + 1'-5"

R2	334	545
R1	545	334
	CASE 1	CASE 2
DOOR REACTION		

THIS DRAWING AND ALL INFORMATION THEREON IS THE PROPRIETARY PROPERTY OF THYSSENKRUPP ELEVATOR AND MUST NOT BE MADE PUBLIC OR COPIED. THIS DRAWING IS LOANED SUBJECT TO RETURN ON DEMAND AND IS NOT TO BE USED DIRECTLY OR INDIRECTLY, IN ANY MANNER DETRIMENTAL TO THE INTEREST OF THYSSENKRUPP ELEVATOR.

FOR: LV EXISTING BUILDING
ADDRESS: 111
CITY: LAS VEGAS, NV 89000

engineering.tomorrow.together.



DRAWN	REV	JOB NUMBER	DATE	SHEET
CA	A	963-602-01A	2/5/2018	7 OF 7